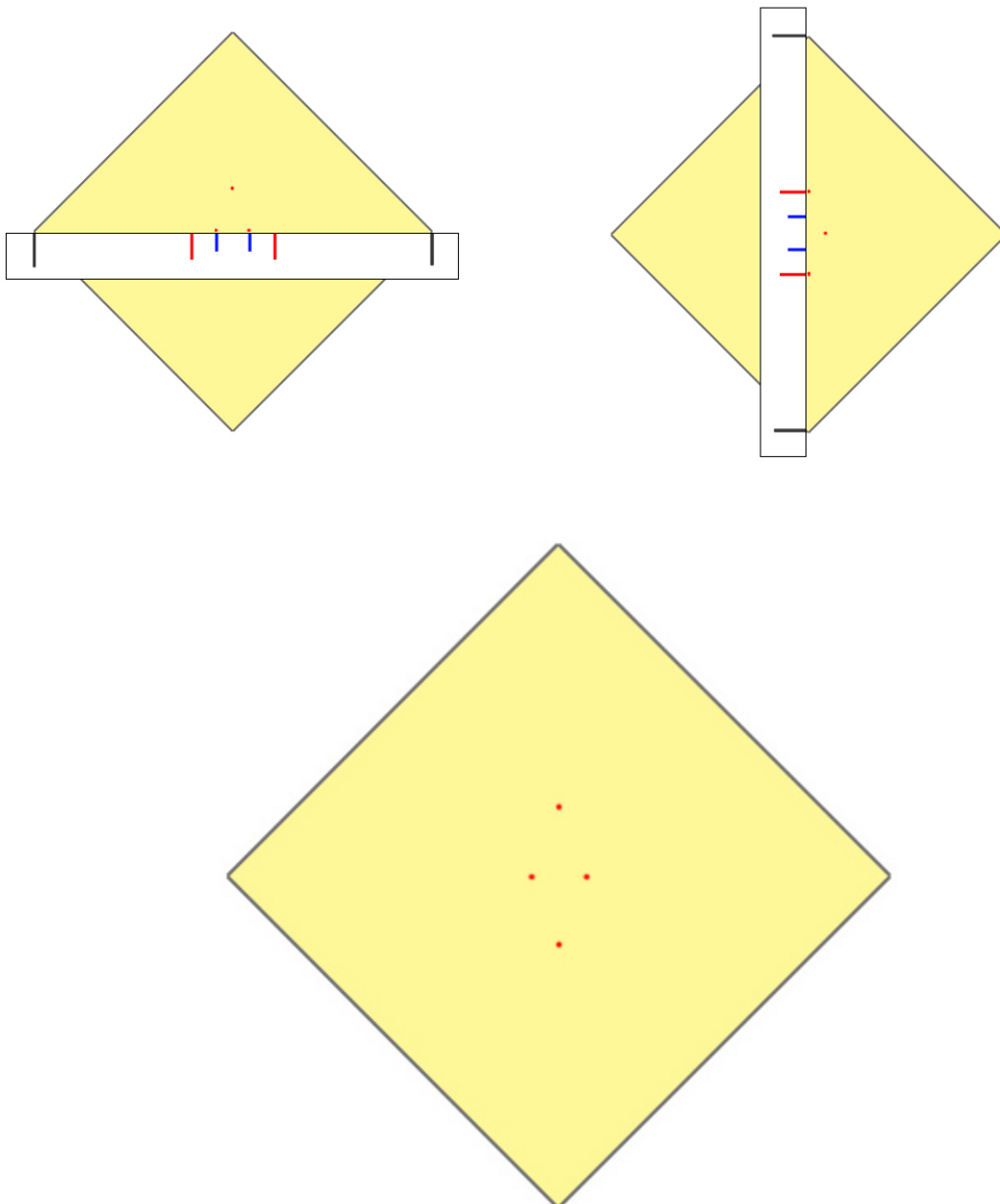
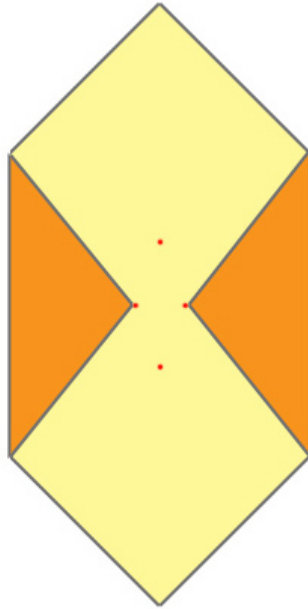


How to make an envelope for your greeting card

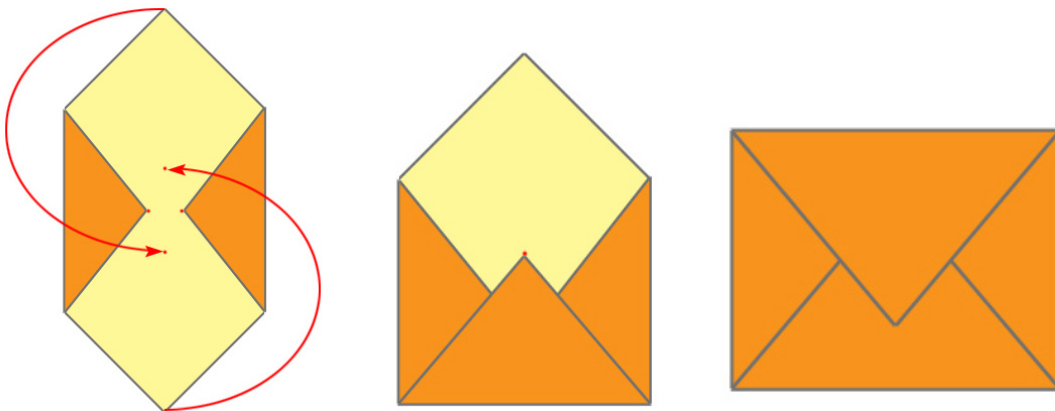
1. Select a piece of envelope paper – white or a color that coordinates with your card.
2. Cut 2.5" from the end of the sheet to make an 8.5" square
3. Use the template to make 4 dots on the square paper.
 - a. Line the black lines of the template up with the corners of the paper.
 - b. Make 2 small pencil dots at the 2 blue lines.
 - c. Turn the template 90 degrees.
 - d. Make 2 small pencil dots at the 2 red lines.



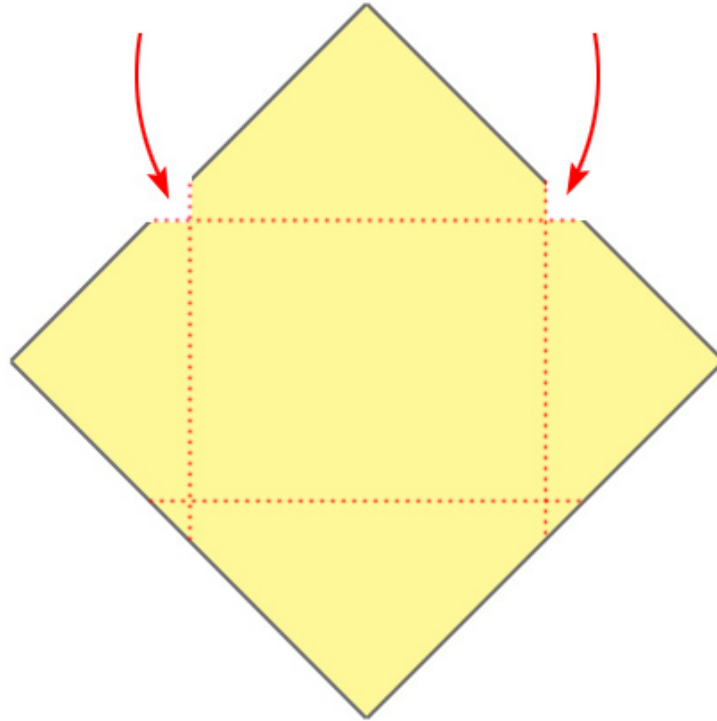
4. Fold the corners of the envelope sides to the 2 dots that are closest together. Do not overlap the corners.



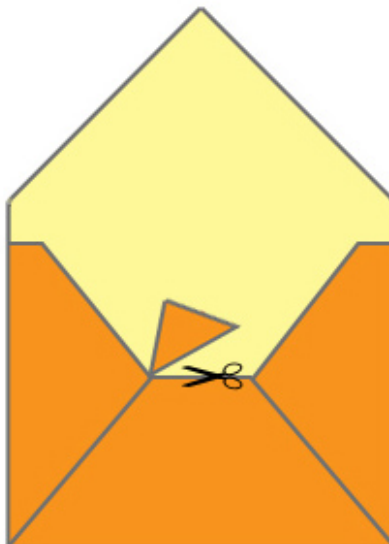
5. Fold the corners of the envelope top and bottom to the 2 dots that are farthest apart from each other. Overlap the corners.



6. Open the envelope and cut the extra paper from the outside folded edges of the top flap.



7. Cut the corner from the bottom flap where it intersects with the side flaps.



- Using a glue stick, apply a narrow strip of glue to the inside edges of the bottom flap. Seal it to the sides.

